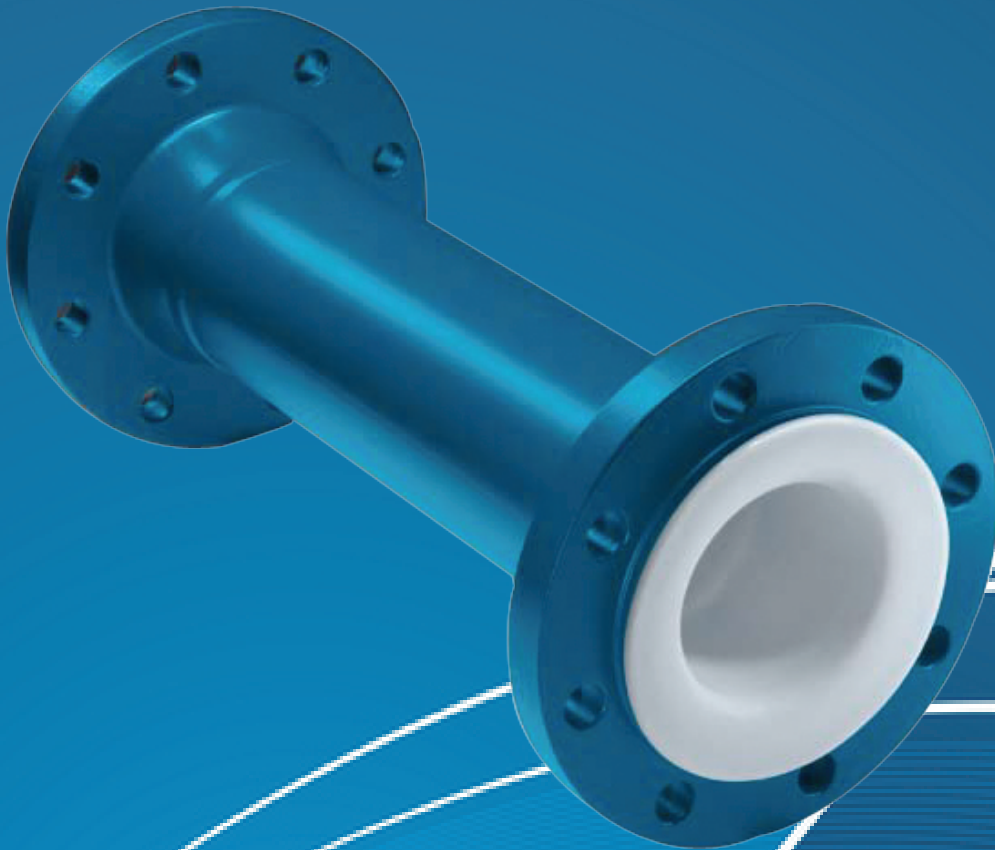
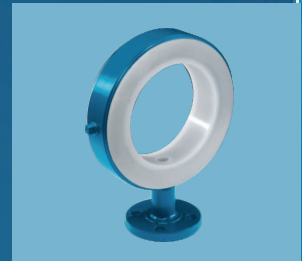




Fluid Transfer Solutions



ABOUT COMPANY

Innovative Process Solution Pvt. Ltd. is a fully integrated company in Fluoro Polymer sector of Manufacturing of Lined Pipes, Fittings and Valves. Apart from it we are manufacturer of Bellows, Dip Pipes, Virgin PTFE Tubes, Rods, Spacers, Bushes, and Sheets etc.

Innovative focusing on enhancement of Productivity, Profitability with the vision of High Quality Products with Global Standards and Innovative Services across Domestic and International Markets with aggressive growth.

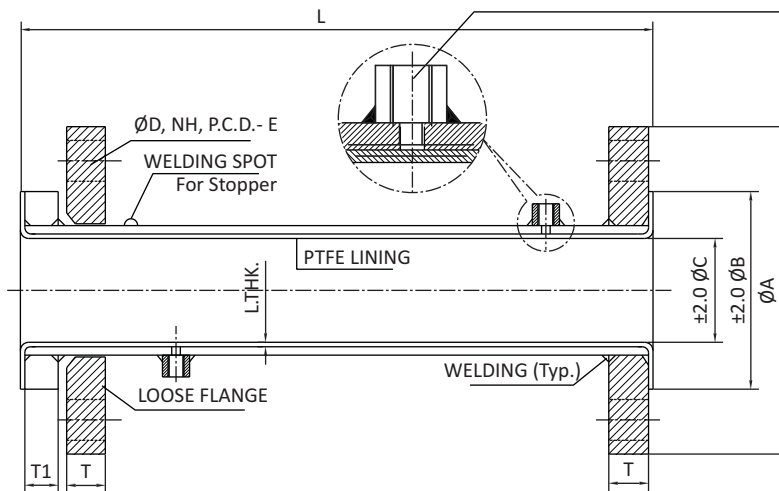
Innovative Process Solution Pvt. Ltd is creating a foot print in a Fluoro Polymers Lined Industry. The Business is spread across the multiple Locations in three countries India, China and Thailand

We produce Test and Guarantee of our products with highest level of International Standards for complete satisfaction of our customers. We have thorough understanding of ANSI, ASTM, DIN, and JIS standards for Pipe line systems and Fluoro Polymers Lined Products

Core Competencies

- An ISO 9001:2008 Certified Company
- Cost Effectiveness
- Modern Manufacturing Services.
- Customer Focused Research Activities.
- Project Management
- Installation Instruction Manuals & Traceability Trackers
- Design and Development Specially for non-standard Items.
- Global Network and Exposure.
- Emergency Response
- Committed to on time Delivery.

LINED PIPE



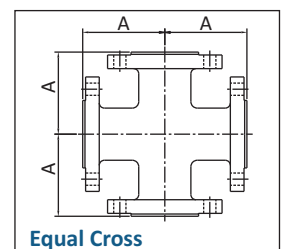
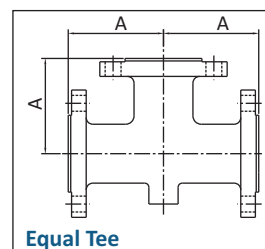
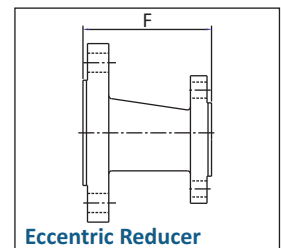
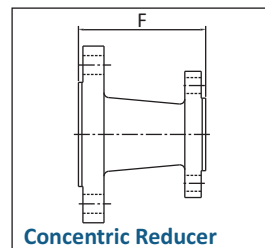
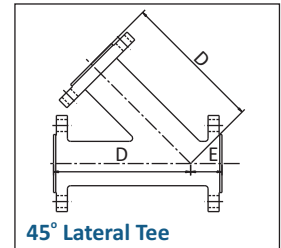
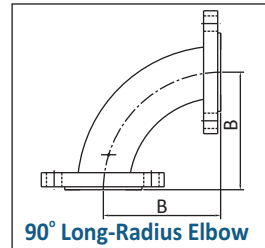
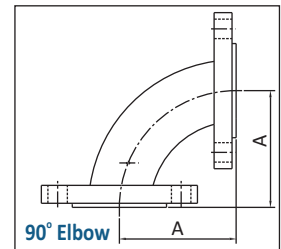
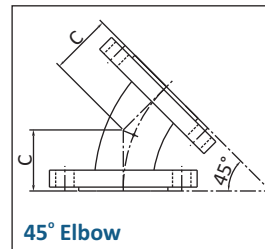
VENT HOLES
Each pipe & fittings is provided with a venting system That will release any gas between the liner and the Housing. Each pipe will have at least 2 vent holes in Diameter 0.12" (3mm), located 2" (50mm) from the Ends. Each fittings shall have two vent holes at least. Reducing flange has no vent hole.

Size	ØA	±2 ØB	±2 ØC	T	Collar T1	P.C.D.-E	ØD	NH	L.THK
mm	mm	mm	mm	mm	mm	mm	mm	mm	mm
25NB	108	50.8	20.0	14.3	11.5	79.4	16	4	3.5
40NB	127	73.0	34.0	17.5	14.0	98.4	16	4	3.5
50NB	152.4	92.0	45.5	19	15.2	120.6	19	4	3.5
65NB	177.8	104.8	55.5	22.2	17.8	139.7	19	4	3.5
80NB	190.5	127.0	70.0	23.8	19.0	152.4	19	4	4.0
100NB	228.6	157.0	93.5	23.8	19.0	190.5	19	8	4.5
150NB	279.4	216.0	144.0	25.4	20.4	241.3	22.2	8	5.0
200NB	342.9	269.9	191.0	28.6	22.9	298.4	22.2	8	5.5
250NB	406.4	323.8	248.0	30.2	24.1	361.9	25.4	12	6.0
300NB	482.6	381.0	299.0	31.7	25.4	431.8	25.5	12	6.0
350NB	533.4	412.7	326.5	34.9	27.9	476.2	28.6	12	6.5
400NB	596.9	469.9	377.56	36.5	29.2	539.7	28.6	16	6.5
450NB	635.0	533.4	428.0	39.7	31.8	577.8	31.7	16	6.5
500NB	698.5	584.2	475.0	42.9	34.3	635.0	31.7	20	6.5
550NB	749.3	641.2	525.5	46.0	36.8	692.1	34.9	20	7.0
600NB	812.8	692.1	576.5	47.6	38.0	749.3	34.9	20	7.0

Note : For Vacuum Service, Please Contact our Technical Person

LINED FITTINGS

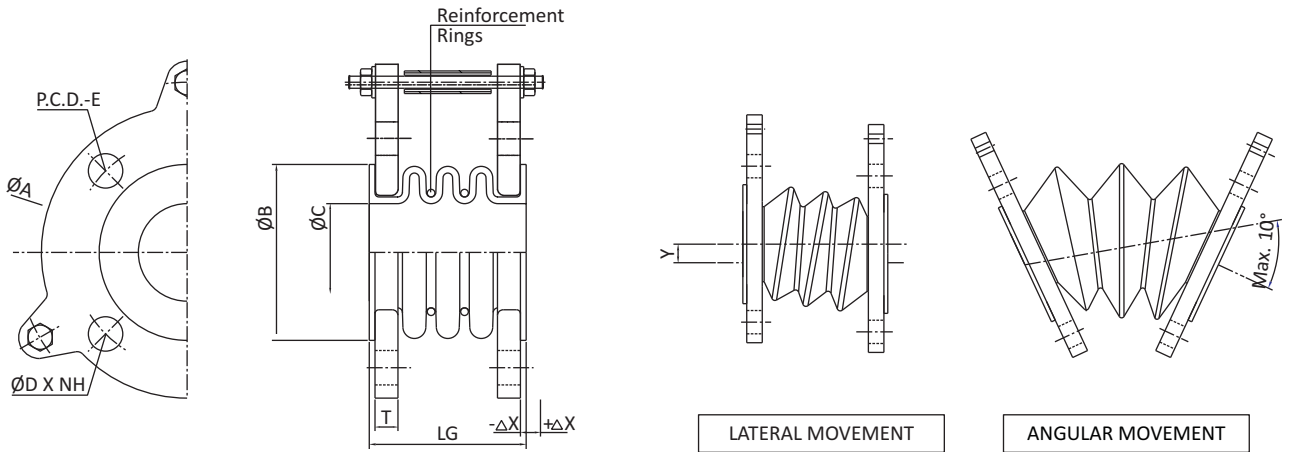
SIZE	A	B	C	D	E	F
	mm	mm	mm	mm	mm	mm
25NB	89	127	44	146	44	114
40NB	102	152	57	178	51	114
50NB	114	165	64	203	64	127
80NB	140	197	76	254	76	152
100NB	165	229	102	305	76	178
125NB	190	260	114	343	89	203
150NB	203	292	127	368	89	229
200NB	229	365	140	444	114	279
250NB	279	419	165	521	127	305
300NB	305	483	190	622	140	356
350NB	356	546	190	686	152	406
400NB	381	610	203	762	165	457
450NB	419	673	216	813	178	483
500NB	457	737	241	889	203	508
600NB	559	864	279	1029	229	610



Technical Notes for Lined Pipes & Fittings

1	Pipes:- Sch. Of Pipe	Seamless as per ASTM A 106, Grade B. Sch 40 from 25 Nb to 200 NB 25NB to 200NB as per Sch.40, From 250NB to 600NB as per Sch.20 Pipes will have one side loose flange and other side fixed flange, Both sides loose flange can be supplied on demand
2	Elbow	As per ASTM A 234 Gr. WPB / A 395 Gr 60-40-18 / A 216
3	Fittings	As per ASTM A 395 Gr. 60-40-18 / A 234 GR WPB / A 216 / SS 304 / SS 316/ SS 316L
4	Flanges	As per ASTM A 105 ,Drilled to ANSI 150# /300# / DIN / BS / IS / JIS / GB std. on demand
5	Fittings Dimensions	Over all dimensions as per ANSI B 16.5, 150 #
6	Hydro Test	As per ASTM F 1545
7	Spark Test	As per ASTM F 1545 at 10KV. Or 25 KV as per client requirement
8	Pipe/Elbow Liners	Manufactured by Paste Extrusion Process by using virgin PTFE as per ASTM D 4895
9	Tee/Red Tee Lining	Manufactured by Injection Molding(melt) process by using virgin PFA as per ASTM D 3307 / FEP as per ASTM D 2116
10	Reducers Lining	Single step down reducer will be manufactured in PTFE Liners as per ASTM D 4895 and more then one step reducers will be manufactured in PFA as per ASTM D 3307 / FEP as per ASTM D 2116
11	Paint:	Two coats of Redoxide & one coat of P.U paint or as specified by customer on additional cost
12	Flare Face	Minimum liner face thickness shall be 80 % of minimum liner wall thickness.
13	Quality	All CS/PTFE Lined pipes and Fittings are manufactured and tested as per ASTM F 1545

BELLOWS



Specification

Size	LG	ØA	ØB	ØC	T	P.C.D.-E	ØD	NH	Δ X	Y
	±3		±2	±2					+/-	
25NB	50	108	51.0	20.0	10.0	79.4	14	4	4.0	3
40NB	55	127	73.0	37.0	10.0	98.4	14	4	5.0	3
50NB	70	152.4	92.0	49.0	12.0	120.6	18	4	6.0	3
65NB	75	177.8	105.0	56.0	12.0	139.7	18	4	6.0	5
80NB	100	190.5	127.0	71.0	12.0	152.4	18	4	8.0	6
100NB	100	228.6	157.0	93.0	14.0	190.5	18	8	10.0	8
150NB	100	279.4	216.0	146.0	16.0	241.3	19	8	10.0	8
200NB	150	342.9	270.0	195.0	16.0	298.4	19	8	12.0	10
250NB	150	406.4	324.0	257.0	20.0	361.9	23	12	12.0	10
300NB	150	482.6	381.0	302.0	20.0	431.8	23	12	12.0	10

Note : Made From Paste Extrusion

Connection

- 150#
- 300#
- PN 10
- PN 16
- PN 20
- PN 40

Range

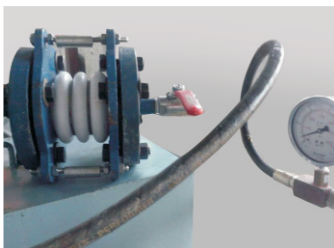
- Standard Rang
- Vacuum Range
- On Demand

Lining PTFE

- Virgin
- Antistatic

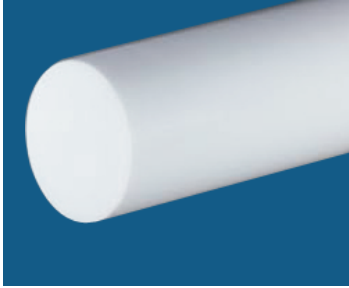
Flange Material

- IS 2062
- ASTM A 105
- Stainless Steel



VIRGIN PTFE ITEMS

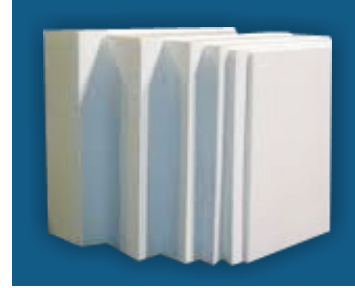
Moulded Rods



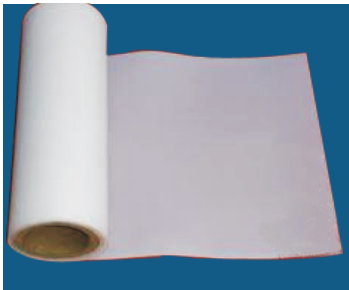
Bushes



Sheets



Skived Sheets



PTFE 'T' Bush



Lined Hose Pipes



OUR PRODUCT

- PTFE Lined Pipe
- PTFE Lined Jacketed Pipe
- PTFE Lined 90° & 45° Elbow
- PTFE Lined Jacketed Elbow
- PTFE Spacer
- PTFE Lined Spacer
- Lined Eq. Tee
- Lined Un.Eq.Tee
- Lined Lateral Tee
- Lined Instrument Tee
- Lined Eq Cross
- Lined Un.Eq.Cross
- Lined Con.& Ecc.Reducer
- Lined Reducing Flange
- Lined Blind Flange
- Lined Sight Glass
- Lined Ball Valve
- Lined Sample Valve
- Lined Butterfly Valve
- Lined Plug Valve
- Lined Non Return Valve
- Lined Diaphragm Valve
- PTFE Pressure Bellow
- PTFE Lined Dip pipe & Sparger
- Lined Header
- Manhole cover
- PTFE Lined Thermowell
- PTFE Lined Hose Pipe
- PTFE Envelope Gasket
- PTFE Gasket 3mm
- PTFE "T" Bush & Sheet
- PTFE Tube & PTFE Rod



An Answer To Corrosion

**INNOVATIVE**TM
PROCESS SOLUTIONS PVT. LTD.
AN ISO 9001:2008 COMPANY

Registered. Office :
182, G.I.D.C., Waghodia - 391 760,
Dist: Vadodara, Gujarat, INDIA
Email : marketing@ips-pl.com
Email : info@ips-pl.com
Web : www.ips-pl.com
Tel. : 02668 - 263555, 263666

INTERNATIONAL NETWORK

Sales Office : Thailand
Ms. Suntharee Chumrit
Tel : +66 886753034
email : ice@techlink.fr

Sales Office : China-Shanghai
Ms Amanda Zhou
Tel: +86 2157783957
e-mail : amanda@techlinkchina.cn